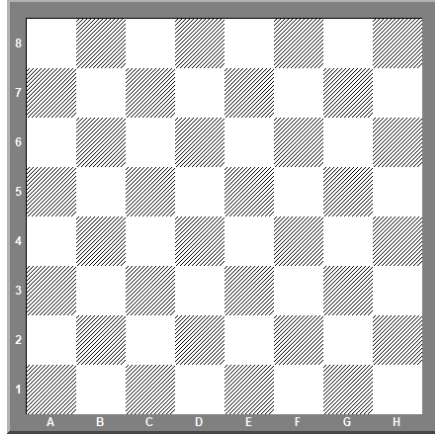


SAMPLE QUESTIONS

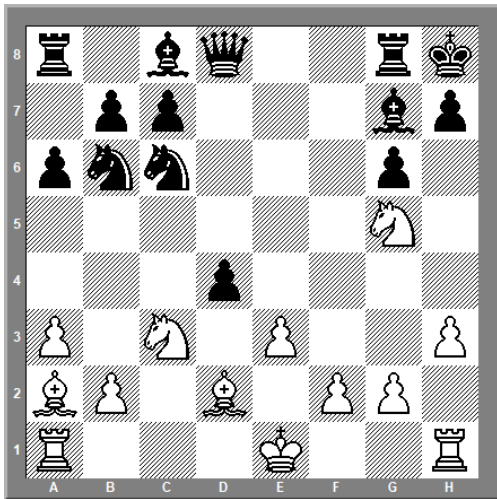
(Answers can be in English/Tamil)

1. Write the correct placement of pieces for white and black

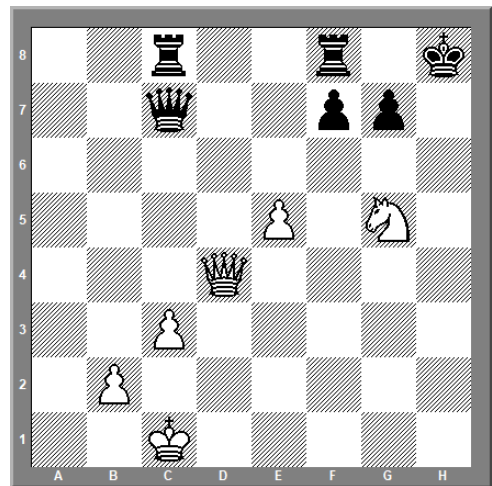


2. As per the laws of chess the colour of the square on the right-hand corner of the player in the chess board should be _____
3. The objective of the chess game between two players is
(a) To give check to the king (b) To win the queen (c) To checkmate the king (d) winning more materials
4. As a chess coach when you are dealing with the students, what should be your approach towards the children
a. Teach the children to learn chess by threats and punishments
Or
b. Teach the children to learn chess by positive approach and patience
5. Match the following
- | | | |
|-----------|---|---|
| a) Queen | - | can be converted to knight by promotion |
| b) Bishop | - | castling |
| c) Rook | - | moves only diagonally |
| d) Pawn | - | Value is 9 |
6. King can move in all direction but one square at a time (except castling). TRUE/FALSE
7. Mention any three opening ideas
8. When castling, can you touch your Rook first?

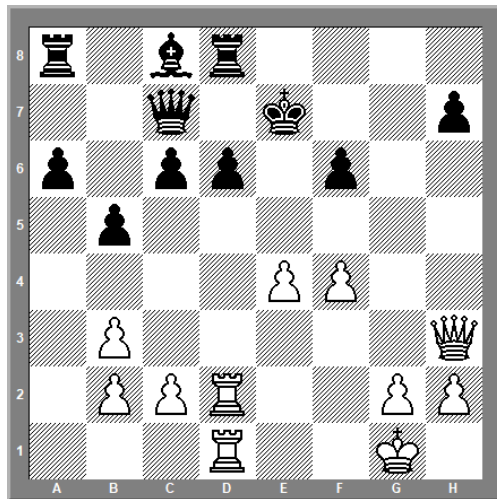
9. White to move



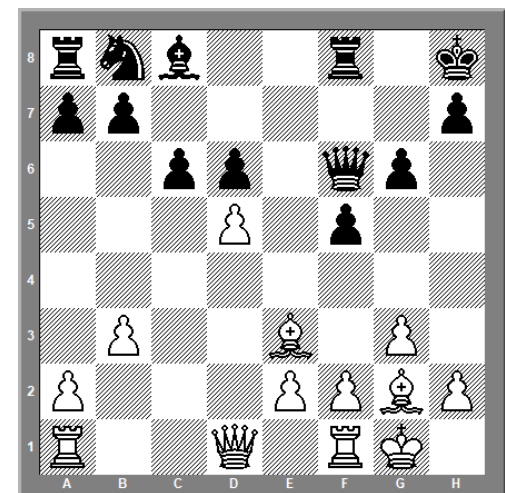
10. White to move



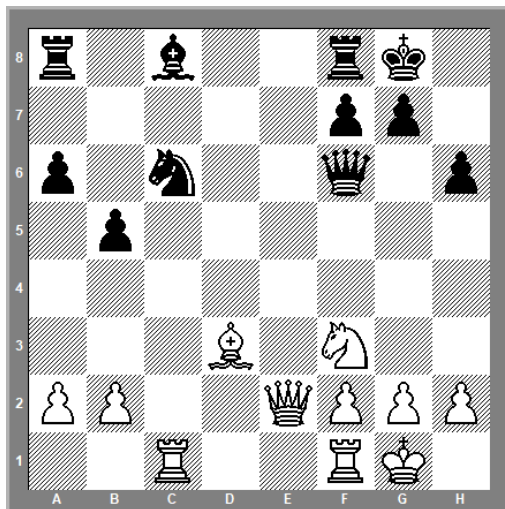
11. White to move



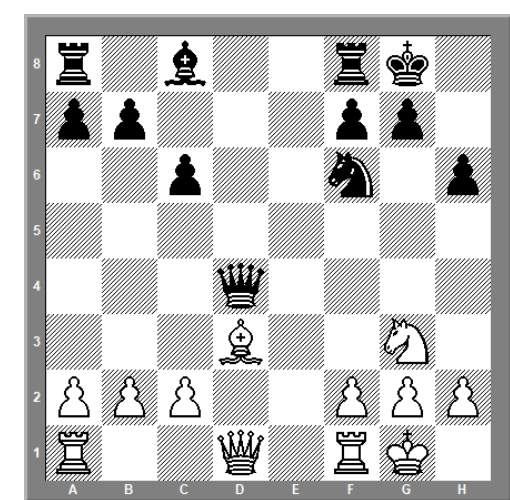
12. White to move



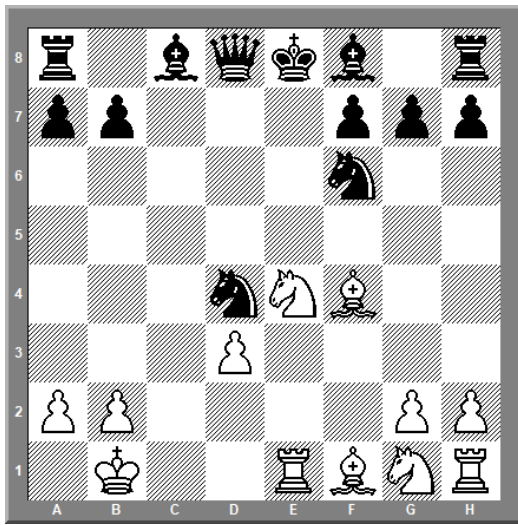
13. White to move



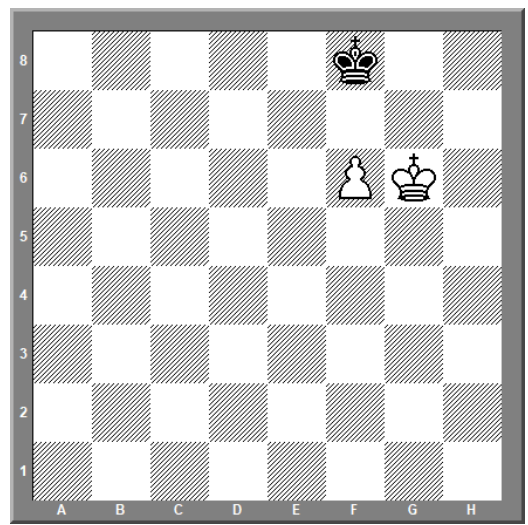
14. White to move



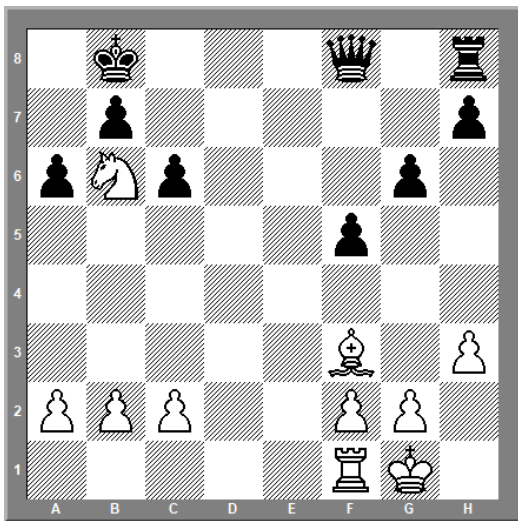
15. White to move



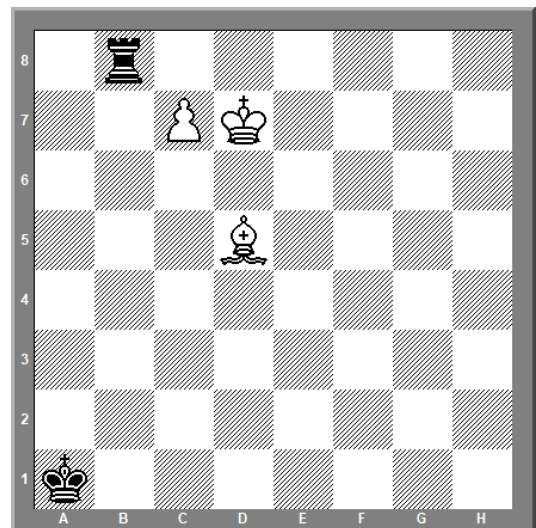
16. White to move



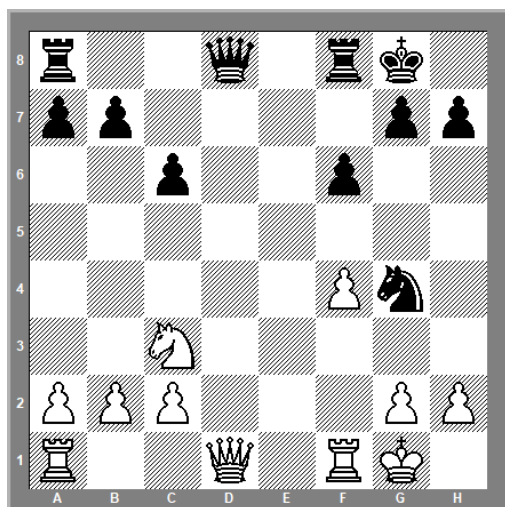
17. White to move



18. White to move



19. White to move



20. White to move

